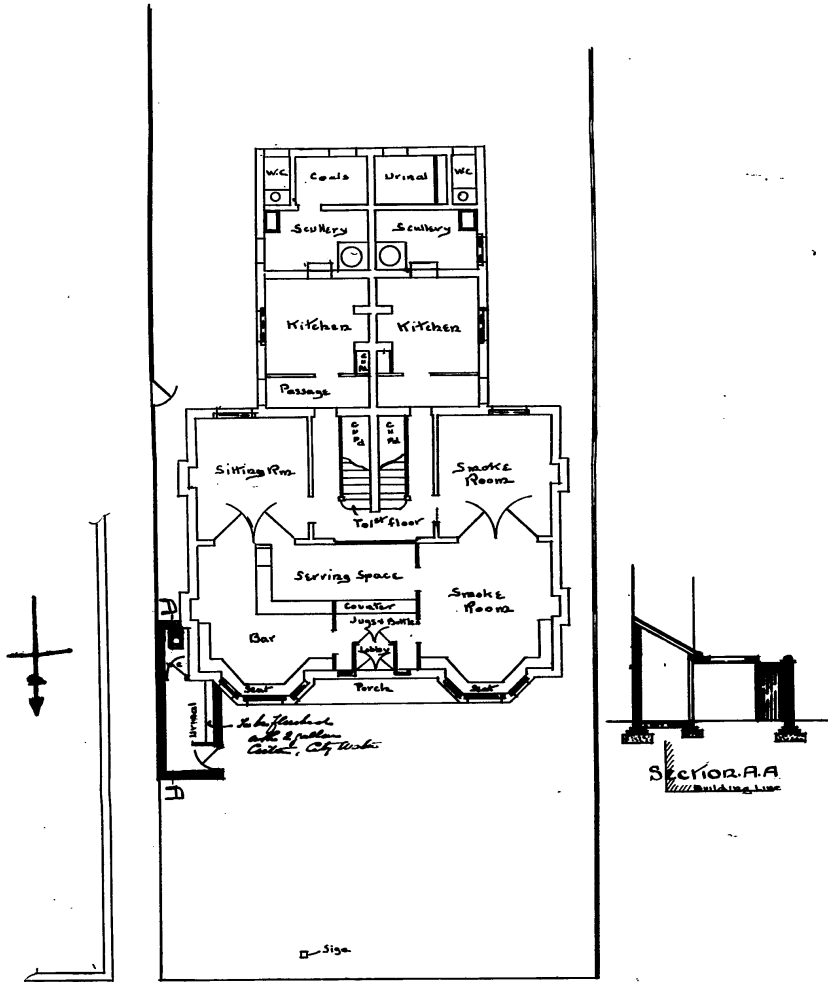


FOR Mess^{rs} HALLS OXFORD BREWERY LTD
GRANDPONT ARMS

EXISTING PLAN



EDITH ROAD

GROUND PLAN

Scale $\frac{1}{5}$ = One Foot

John T. McKinnis
 187. High Street



(Left) plans of the Grandpont Arms, Edith Road, and (above) the pub in the 1990s.
 Photograph courtesy of Carole Newbigging.